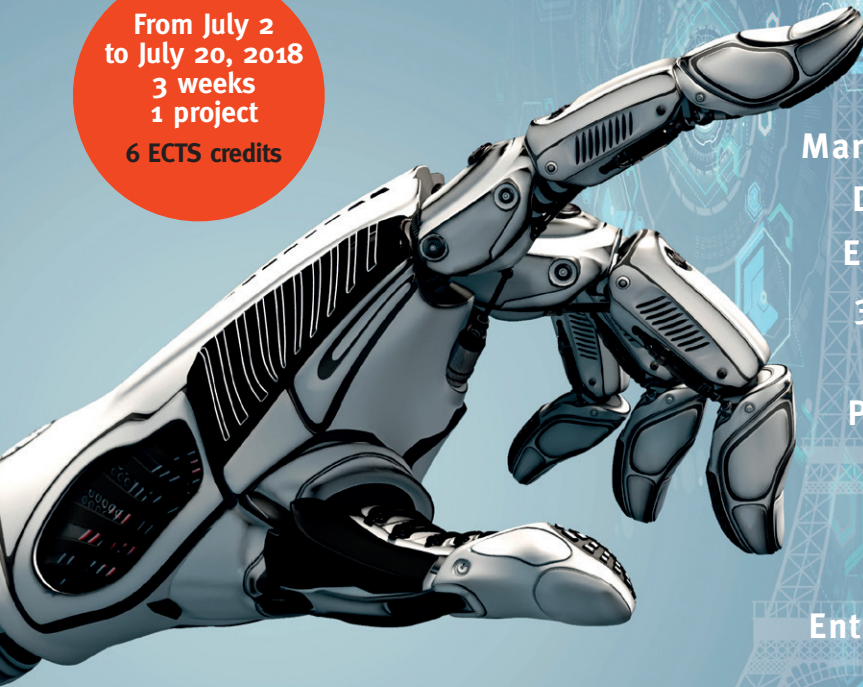


SUMMER SCHOOL 2018

« BECOME A MAKER »

Develop your own robot in our Paris and Lille labs and bring it home!

From July 2
to July 20, 2018
3 weeks
1 project
6 ECTS credits



Digital
Manufacturing
Digital Arts
Engineering
3D Printing
Electronic
Prototyping
Robotics
DIY
DIWO
Entrepreneurs
Startups

ESME SUDRIA'S ROBOT-MAKING PROGRAM

Join our digital manufacturing labs (E-Smart Labs) and immerse yourself in an innovative and creative learning environment. Use our cutting-edge technology tools and learn new skills from our experts. Meet and connect with the leading French maker community.

Paris Montparnasse Lab / Weeks #1 & #2

With more than 40 collaborative labs and 3 000 startups, Paris is a key-player in the world tech startup major league.

Courses and workshops:

Digital Manufacturing / Interactive & Algorithmic Design / Video Mapping / Prototyping / Image Processing / CNC / Survival French

+ Explore Paris like never before : startups, fablabs and incubators, Versailles, Bateaux Mouches, Stand-Up Comedy Show, etc.

Lille Lab / Week #3

At the crossroads of Europe and with a strong startup ecosystem, Lille is a metropolitan and international platform for innovation and new technologies.

Courses and workshops:

CAD / 3D Printing / 3D Modeling / Electronics / Arduino / Survival French

+ Discover old and modern Lille : coworking spaces, la Citadelle, EuraTechnologies, le Vieux Lille, gastronomic stroll, day-trip to Brussels, etc.

Want to know more?

Visit www.esme.fr/en/summer-school

Fees
Application fee: 60€
Program fees: 2100€ (including accommodation, tuition, French language classes, robot equipment, cultural & scientific activities, breakfast & lunch on weekdays, public transport pass, high-speed train ticket Paris-Lille, round-trip transportation to Brussels)
A special discount applies to students from our partner universities



Discover
3 major
European cities
in just
3 weeks!

ESME
SUDRIA
— ENGINEERING SCHOOL FOUNDED IN 1905 —

International Office

lauriane.blandel@esme.fr

+33 1 56 20 62 49

ESME Sudria Engineering School

40 rue du Docteur Roux

75015 Paris

France

Find us online

www.esme.fr/en

#ESMEinternational

ABOUT ESME SUDRIA

Founded in 1905, ESME Sudria trains engineers for key roles in a variety of new technology sectors: energy, systems and the environment; embedded systems and electronics; images, signals and networks, and digital and data intelligence. ESME Sudria's programs emphasize the spirit of innovation, the importance of projects and initiatives, and the international, human and cultural perspective. With more than 14,000 graduates, ESME Sudria's programs are recognized by the French government and by the Commission des titres d'ingénieur (CTI), the French commission on engineering credentials.

This school is a member of the IONIS Education Group.

IONIS
EDUCATION GROUP

www.ionis-group.com